



MSA 25NM ARP

COMMS 6210 kHz (SSB)
 PRIMARY 123.45 MHz (AM)
 ALT 129.7 MHz (AM)
 GROUND Marine Ch 10

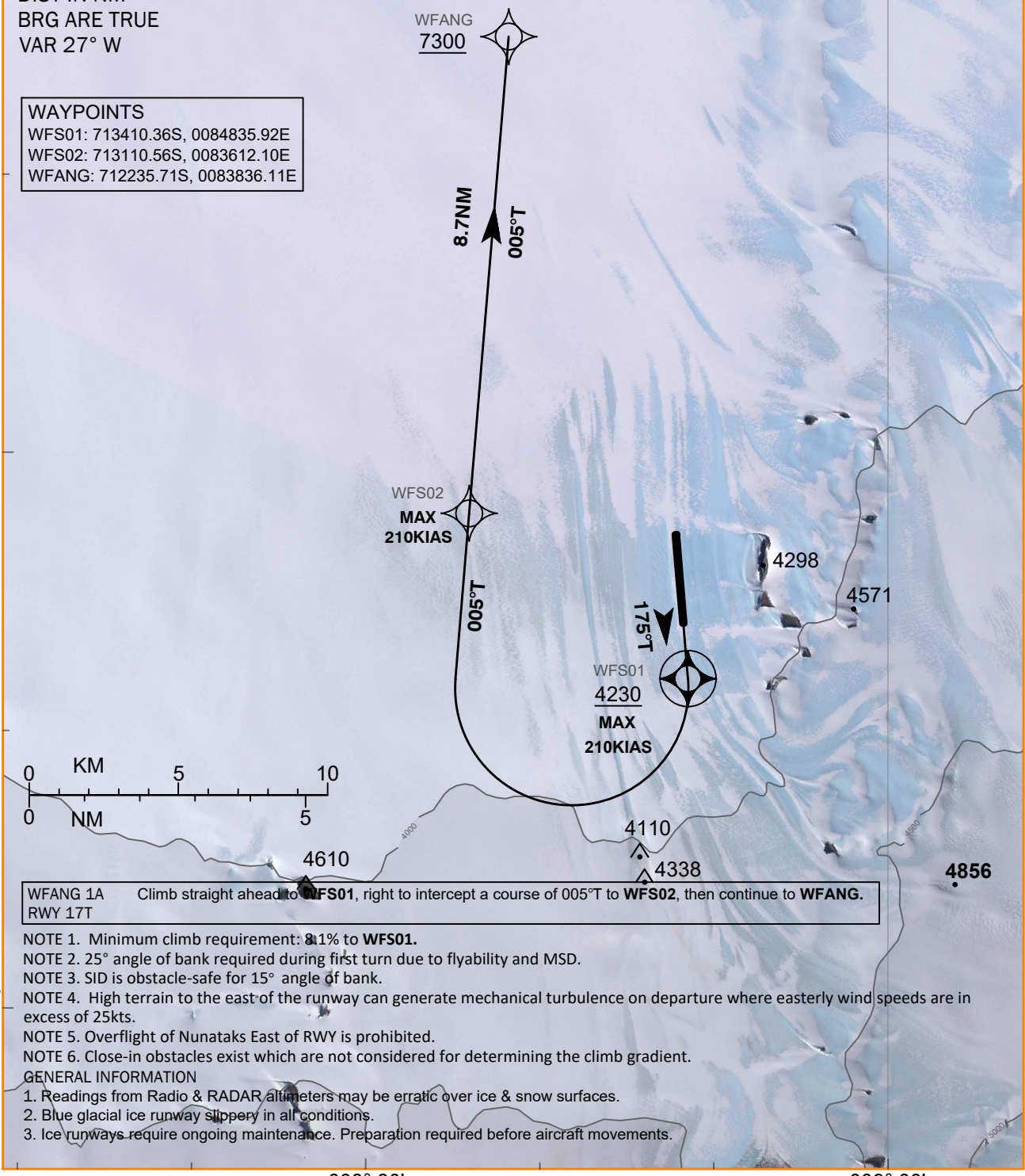
WFR Phone Numbers:
 Primary +44 2080 6829
 Alt +8816 7775 0957

WARNING
 No turns below 4225 QNH
 (500 QFE).

ELEV, ALT IN FEET
 DIST IN NM
 BRG ARE TRUE
 VAR 27° W

WAYPOINTS
 WFS01: 713410.36S, 0084835.92E
 WFS02: 713110.56S, 0083612.10E
 WFANG: 712235.71S, 0083836.11E

71° 30'
 Changes : New Procedure.
 71° 20'



WFANG 1A RWY 17T Climb straight ahead to **WFS01**, right to intercept a course of 005°T to **WFS02**, then continue to **WFANG**.

- NOTE 1. Minimum climb requirement: 3.1% to **WFS01**.
- NOTE 2. 25° angle of bank required during first turn due to flyability and MSD.
- NOTE 3. SID is obstacle-safe for 15° angle of bank.
- NOTE 4. High terrain to the east of the runway can generate mechanical turbulence on departure where easterly wind speeds are in excess of 25kts.
- NOTE 5. Overflight of Nunataks East of RWY is prohibited.
- NOTE 6. Close-in obstacles exist which are not considered for determining the climb gradient.

GENERAL INFORMATION

- 1. Readings from Radio & RADAR altimeters may be erratic over ice & snow surfaces.
- 2. Blue glacial ice runway slippery in all conditions.
- 3. Ice runways require ongoing maintenance. Preparation required before aircraft movements.

008° 30' 009° 00'