

# INSTRUMENT APPROACH CHART - NOT APPROVED WHITE DESERT WOLF'S FANG RUNWAY

**RNP**

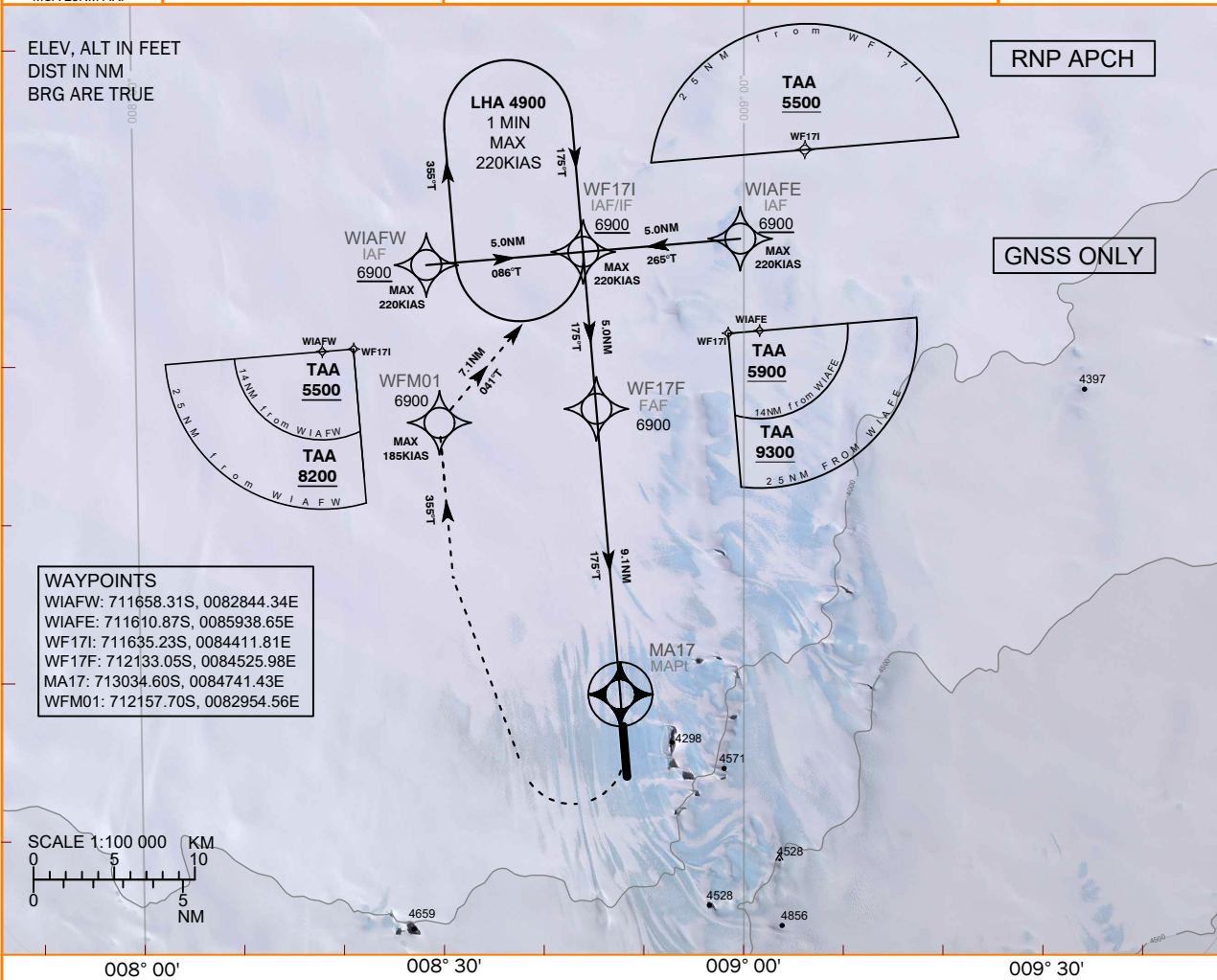
**RWY 17T**

(ACFT CAT A,B,C,D)

Comms	6210 kHz (SSB)	WFR Phone Numbers:	AD ELEVATION	3725
Primary	123.45 MHz (AM)	Primary	THR ELEVATION	3637
Alt	129.7 MHz (AM)	Alt	BEARINGS ARE TRUE	
Ground	Marine Ch 10			



Changes : New Procedure.

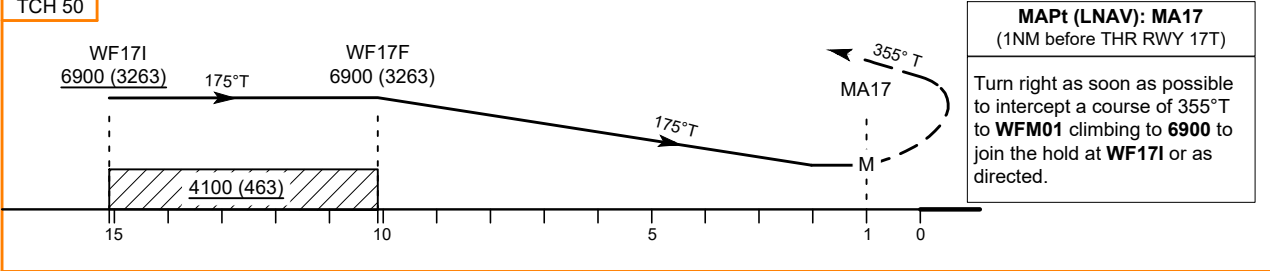


**WAYPOINTS**

WIAFW:	711658.31S, 0082844.34E
WIAFE:	711610.87S, 0085938.65E
WF17:	711635.23S, 0084411.81E
WF17F:	712133.05S, 0084525.98E
MA17:	713034.60S, 0084741.43E
WFM01:	712157.70S, 0082954.56E

RECOMMENDED PROFILE LNAV 5.24%, 318FT/NM

NM to MA17	9	8	7	6	5	4	3	2	1	0
NM to THR17	10	9	8	7	6	5	4	3	2	1
ALT (HGT)	6870(3233)	6550(2913)	6230(2593)	5920(2283)	5600(1963)	5280(1643)	4960(1323)	4640(1003)	4320(683)	4000(363)



Aircraft Category		A	B	C	D
OCA (OCH)	LNAV	4170 (533)	4190 (553)	4240 (603)	4340 (703)
OCA (OCH)	VM(C)	CIRCLING PROHIBITED			

- NOTES.**
- |                 |        |     |     |     |     |     |
|-----------------|--------|-----|-----|-----|-----|-----|
| Rate of descent | G/S KT | 160 | 140 | 120 | 100 | 80  |
|                 | FT/MIN | 850 | 740 | 640 | 530 | 420 |
- Readings from Radio & RADAR altimeters may be erratic over ice & snow surfaces.
  - Caution: Mountainous area to the south of runway end.
  - Caution: High terrain to the east of the runway can generate mechanical turbulence where easterly wind speeds are in excess of 25kts.
  - Caution: Blue glacial ice runway slippery in all conditions.
  - Prior permission required. Landing fees apply.
  - Ice runways require ongoing maintenance. Preparation required before aircraft movements.
  - Overflight of Nunataks East of RWY is prohibited.